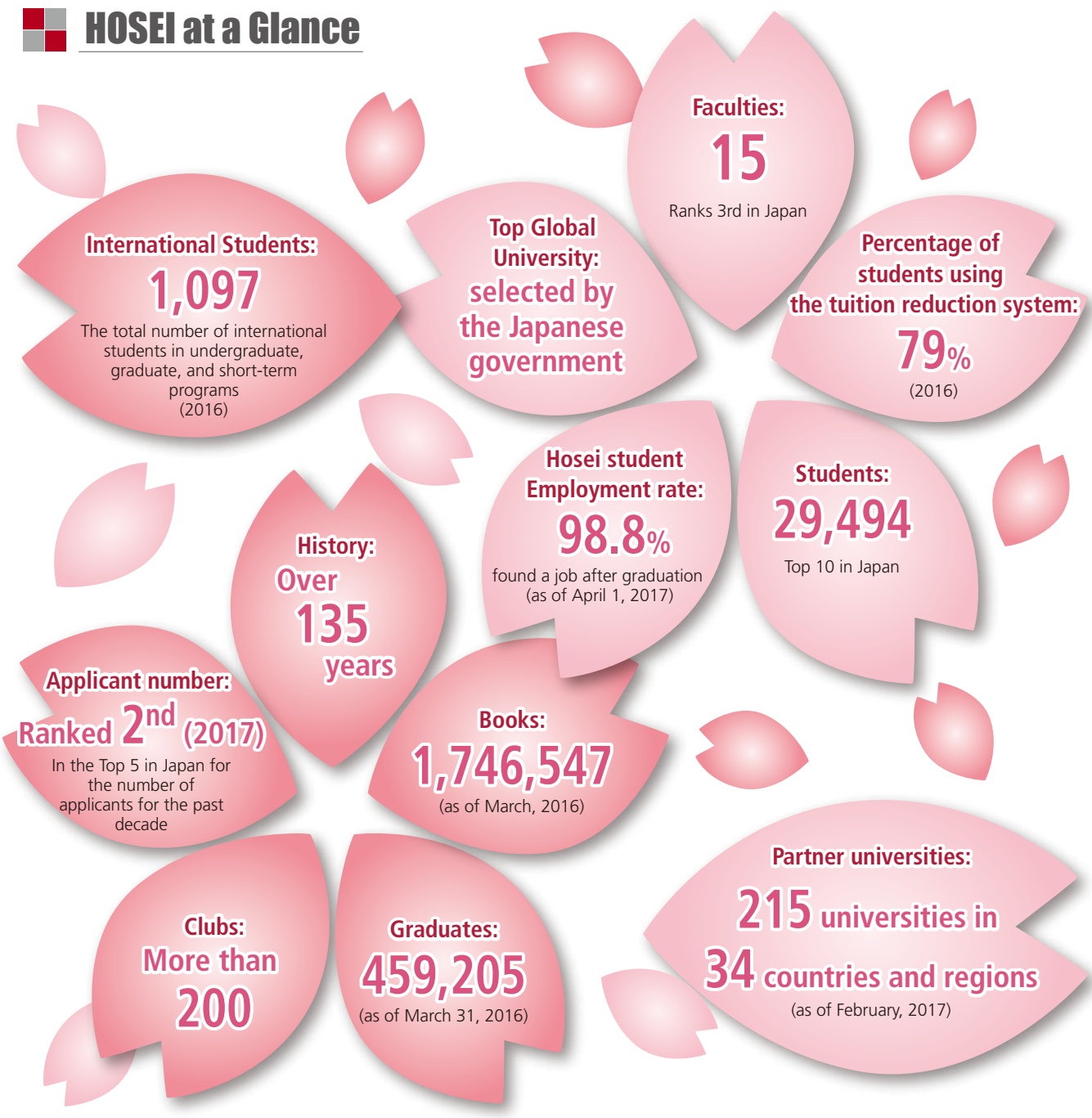
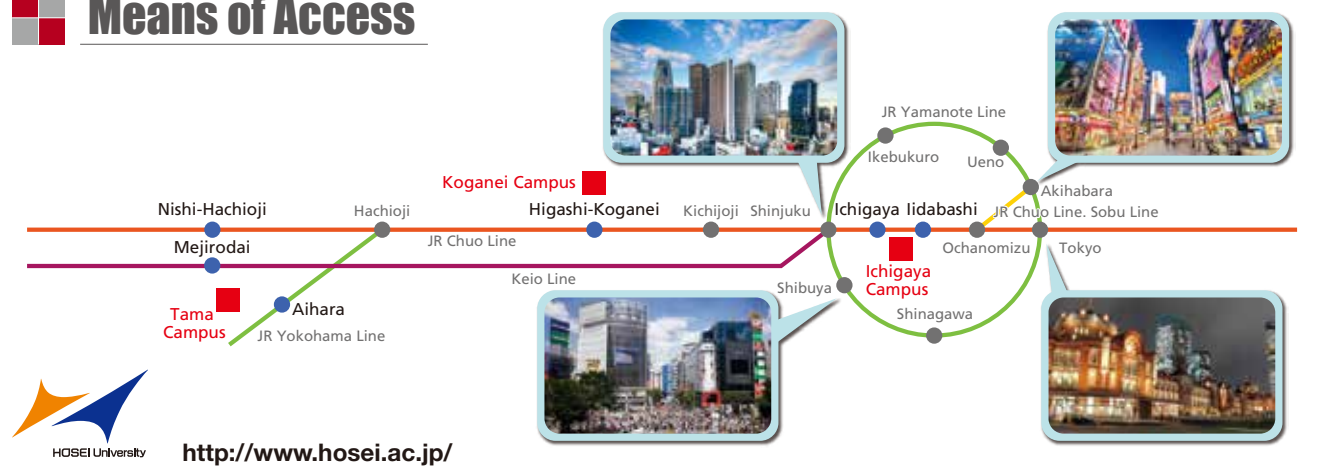


HOSEI at a Glance



Means of Access



HOSEI University

ようこそ
日本へ

WHY HOSEI ?

英語版



Hosei University is one of the oldest and finest universities in Japan. Hosei University offers a wide range of academic programs and various experiences for international students.

Study in Tokyo, Japan

Hosei University is located in Tokyo, Japan. Why do you study in Japan and in Tokyo?

1 Discover Japanese Culture, state-of-the-art Science and Technology and World Heritages.

Japan is a beautiful country with much to offer. International students experience pop culture, state-of-the-art science and technology, world heritages which are specific to Japan.

2 Study in the Center of Tokyo

The Ichigaya campus of Hosei University is located in the center of Tokyo. Two other campuses are also located in Tokyo. Tokyo is one of the most amazing cities in the world. Studying in Tokyo provides a choice of museums, pop culture, shopping, and entertainment to enrich your experience. Shinjuku, Ikebukuro, Akihabara, Shibuya, and Ginza are less than 30 minutes from the Ichigaya campus by train.



3 Safe and Comfortable living

Japan offers International students an environment to focus on their studies safely and comfortably. Japan is known for its low crime rate, advanced infrastructures, and outstanding hospitality. The on-time public transportation system helps you reach your destination safely. A well-established health insurance system enables students to receive advanced medical care for a small amount of money. International students can find great friends and interact with them comfortably because 200,000 international students from more than 170 countries are studying at higher educational institutions in Japan. (Excerpt from the website of JASSO) Many foreign embassies are located in Tokyo which students can easily go to if needed.



4 Affordable Tuition and a Wide Range of Financial Supports

Japanese Universities offer comparatively lower tuition compared to the United States and the United Kingdom. There is a wider range of scholarship programs and tuition reduction programs available to international students in Japan than those in other countries.

Study in Hosei University

Japan has more than 750 universities. Why should you choose Hosei University? Hosei University is an ideal location for your next study for the following reasons:

History & Tradition

1 A More Than 135 Year History

Hosei University was established in 1880 and its academic fields have been organized into 15 undergraduate faculties and 38 departments, 15 graduate schools, and 2 professional graduate schools from arts to sciences. All of the programs are accredited by the Japanese government.

2 Globalized University

In 1904, Hosei University started to accept a number of Chinese students by establishing a short program for Chinese Students ahead of other universities. Today, Hosei University has been part of the Top Global University Project* and accepts 1097 international students in degree-seeking programs as well as student exchange programs. The number of partner universities is 215 in 34 countries and regions.

*Top Global University Project is a government-initiated project which provides prioritized support and funding for 37 selected universities in Japan.

Education and Support for International Students

3 English-based degree programs

Hosei offers several degree-seeking programs taught in English. Moreover, international students in those programs can learn the Japanese language while earning a degree in English. Hosei's English-based programs are:

Undergraduate Programs

- GIS (Global and Interdisciplinary Studies), Faculty of Global and Interdisciplinary Studies
- GBP (Global Business Program), Faculty of Business Administration
- SCOPE (Sustainability Co-creation Programme), Faculty of Sustainability Studies
- IGESS (Institute for Global Economics and Social Sciences)

Graduate Programs

- Global MBA, Business School of Innovation Management
URL: <http://www.im.i.hosei.ac.jp/gmba/>
- IIST (Institute of Integrated Science and Technology), Graduate School of Computer and Information Sciences, Science and Engineering.

For more information on English-based degree programs please scan the QR code ▶



Japanese Language Program (JLP)

For international students who are eager to study Japanese, Hosei has the Japanese Language Program (JLP) for non-degree students who are non-native speakers of Japanese.

For more information on JLP, please scan the QR code ▶



4 Career Support

Hosei international students can increase their employability utilizing a wide range of fee-free support offered by the Career Center.

- The Business Japanese Course enables students to improve Japanese business language proficiency, which Japanese companies prioritize in their recruiting activities.
- Guidance for international students provides key advice to help with document screening and recruiting interviews.
- Regular counselors provide job hunting consultations on a private, one to one basis.

These supports are responsible for success in students' recruiting activities. Hosei international students entered prominent Japanese companies such as TORAY, IHI Corporation, and NIPPON STEEL & SUMIKIN CHEMICAL CO., LTD. in 2017.

5 International Interactions

Hosei University offers a variety of different facilities and events for international students to enrich their campus experiences.

- International Student Advisors and International Students Supporters helps international student settle into Hosei and Japan.
- Global Lounge (G-Lounge) on three campuses offer students opportunities to communicate in languages other than

Japanese, with many different events. International students and Japanese students can have casual conversations on the campuses to make friends.

-Hosei University International Club organizes exchange events with international students such as the Japanese speech contest (with many international students participating), going to fireworks displays, watching the Big Six University Baseball League Tournament, and other activities.



6 Accommodation

Off-campus dormitories are located about 40 minutes by train from each campus. Residents are provided with breakfast and dinner from Monday to Saturday, private bedrooms, an in-room Internet connection, and showers, available at any time.

Students can ask their questions or concerns to a dormitory manager. They also enjoy parties and other events in the dormitories.

For more information on Accommodation, please scan the QR code ▶



7 Other Support and Facilities

- Computing and Networking Center that facilitates the use of the Internet and e-mail
- Online Information for part-time jobs
- Study room where students can study in a quiet atmosphere
- On-campus health clinics that provides medical care
- Cafeterias offering a variety of dishes at reasonable prices
- Library with a collection of 1.7 million books
- Two accommodations for off-campus activities (Fuji Seminar House and Ishioka All-purpose Gymnasium for a variety of sports)
- The Campus Members Program offering Hosei students free admissions to several museums
- Full support for immigration procedures



Tuition, Scholarships, and Estimated living expenses

8 Tuition Reduction System and Scholarships

Eligible undergraduate students receive a tuition reduction depending on their grades as follows:

First year students receive a 30% tuition reduction. Second, third and fourth year students receive a 20% to 40% tuition reduction depending on their academic performance.

Hosei University provides various internal Scholarships including the Hosei International Fund (HIF) International Student Scholarship, which students with good academic results can receive up to 1,000,000 JPY a year.

For more information on Scholarships / Tuition Reduction, please scan the QR code ▶ (Please see "Chapter 4 Scholarships/Tuition Reduction" on the International Students Handbook)



●Tuition (JPY/year)

Course	GIS	GBP	SCOPE	IGESS
1 st year	1,543,000		1,436,000	
2 nd & Subsequent year	1,303,000		1,196,000	

*Amounts are subject to change. (For 2018)

*1st year tuition includes admission fee (240,000 JPY).

●Estimated living expenses (JPY/month)

Housing	63,000
Food	27,000
School commuting costs	5,000
Utilities	7,000
Insurance and medical	2,000
Hobbies & Entertainment	6,000
Others	21,000
Total	131,000

*Data from JASSO, etc.

<Annual Costs> (JPY)

Living expenses	1,572,000 (131,000×12 months) (≒ \$14,291)
Tuition	1,196,000~1,543,000 (≒ \$10,873~14,028)
Total	2,768,000~3,115,000 (≒ \$25,164~28,318)

*1USD=110JPY

Voices of Students

1. How has your campus life and study been?

I'm enjoying the life in Japan. But in the beginning, I felt nervous because there were few Vietnamese students at Hosei and I couldn't speak Japanese. Luckily, I've made many good friends and great sensei (professors). They've taught me Japanese, supported my research, helped me to find a job, and gave me a lot of useful advice. I feel like I'm a part of a big family and now I'm confident enough to live in Japan.

2. What is your most impressive experience so far?

My most impressive experience in Japan is that everyone is very kind, emotional, and extremely polite. People are willing to help you even they don't know you. You don't need to worry about losing things or delays because they're honest and always on time.

3. Why do you recommend Hosei to international students?

Every university in Japan is a good choice for international students. But Hosei University, which has a modern learning environment, with a long history, is one of the biggest universities in Japan, and is located in the capital of Japan. With these things, I believe that Hosei will be the best place for International students for studying and living.

4. Message for international students considering Hosei as the next step to study.

For those who want to come to Hosei University, you are wise and clever because you are making a right decision. Hosei University is a beautiful place where you can experience something new and learn a lot. You are always welcome at Hosei and I'm always willing to help you. I am looking forward to seeing you.



Huu Quan, Cap from Vietnam Master student, majoring Applied Informatics